

RELO

SUBSTRUCTURE JOIST



RELO DETAILS

The lateral channels running along the side of substructure joists are designed to house the RELO system accessories and facilitate the assembly of frame construction.

RELO P, K and U substructure joists are produced as standard with two 1.5 mm thick anchoring plates to ensure a secure screw fixation.

RELO P is ideally suited for visible fixing applications - PROFILA stainless steel self-tapping screws. The integrated 6.0 mm deep ventilation channel ensures necessary ventilation and permits integral wood protection, at the same time reduces shearing effects that act on the screw.

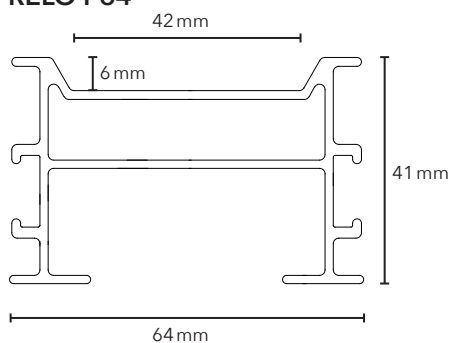
RELO T is a system-related substructure for the TENI Clip. The integrated screw channel permits angled screw installation into aluminum. Two lateral guide rails automatically align and centres the connector.

RELO K reversible joist system. Depending on the fastening system both surfaces can be utilized - ventilation channel or flat surface. Ceramic tiles can also be laid on the flat surface in combination with GUMO LGR 3 and conventional joint spacers.

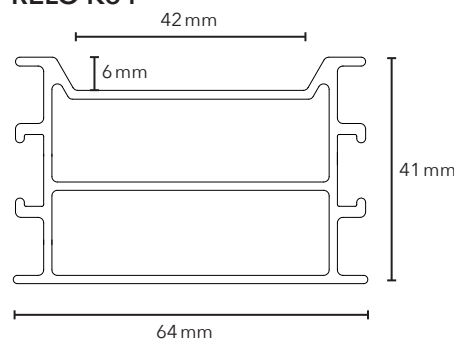
RELO U ultra-slim design is used for low installation heights. Ceramic tiles can be laid on top in combination with GUMO LGR 3 and conventional joint spacers.

RELO N is a system-related substructure for LIGO and PLATA series. The integrated screw channel facilitates easy screwing in aluminium. In addition, the shear forces acting on the fastening are considerably reduced by the 9 mm recessed screw channel. Two lateral guide rails automatically align and centres the connector.

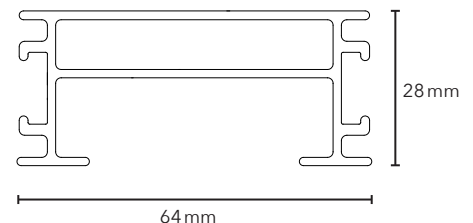
RELO P64



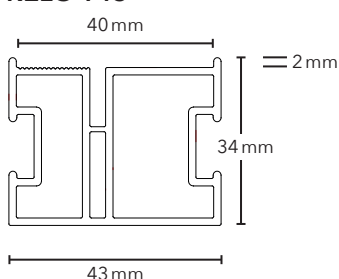
RELO K64



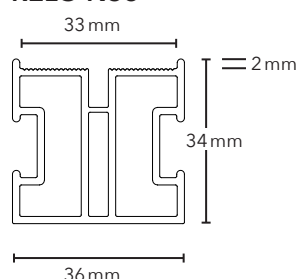
RELO U64



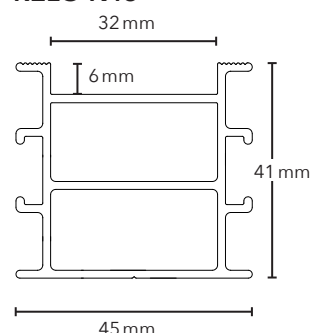
RELO T43



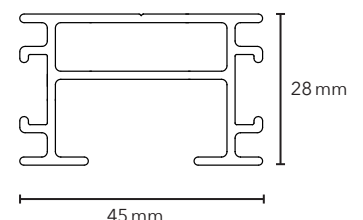
RELO N36



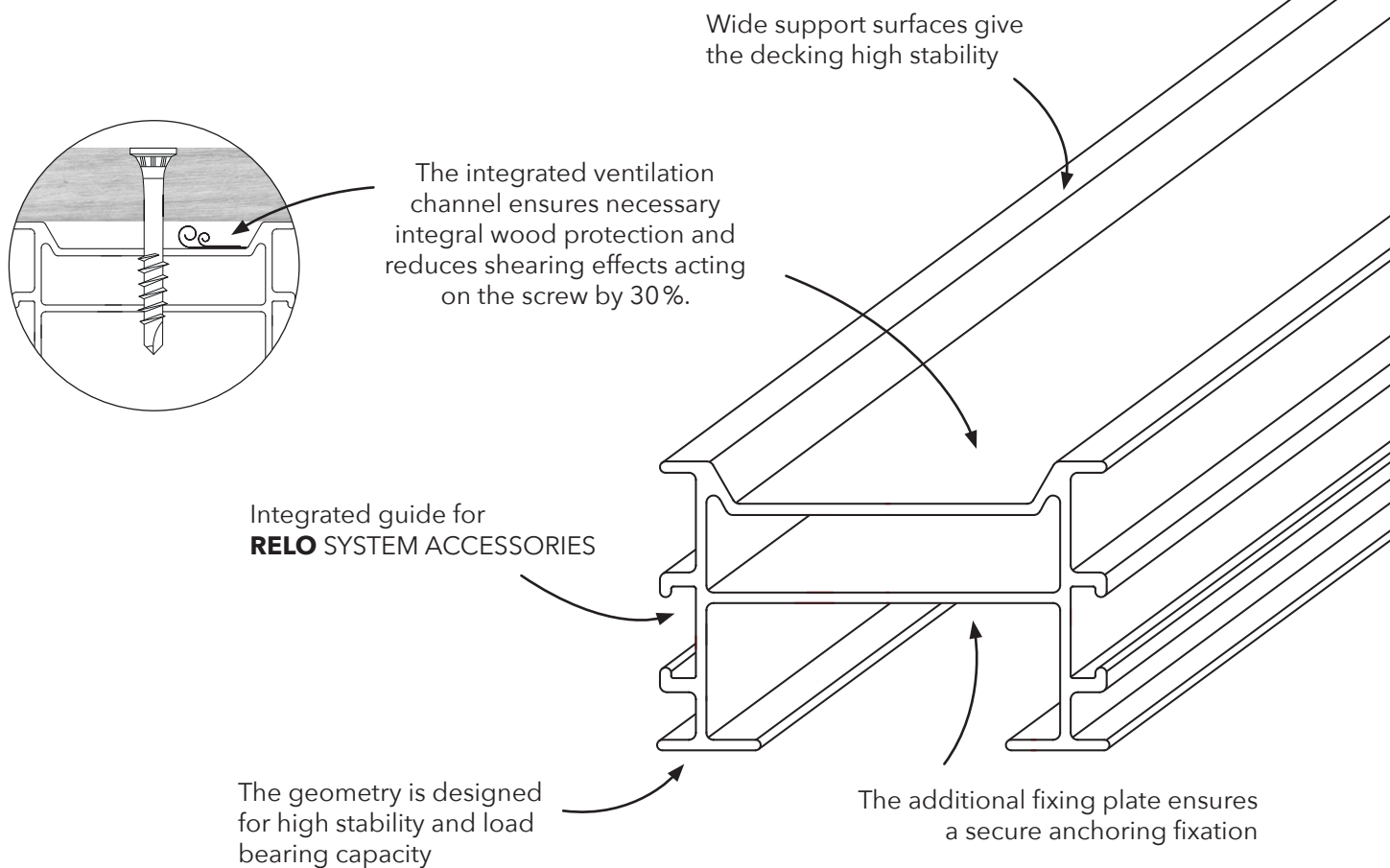
RELO K45



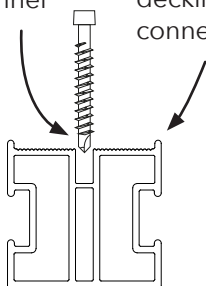
RELO U45



RELO HIGHLIGHTS

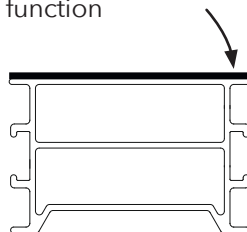


with integrated screw channel

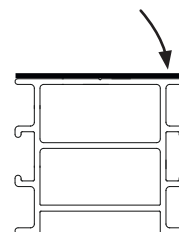


Guide rail for decking connectors LIGO

GUMO LGR 3 for laying of ceramic tiles with shock absorbing function



GUMO K separates both surfaces prone to friction when using stainless steel connectors



OVERVIEW	RELO N36	RELO T43	RELO K64		RELO K45		RELO U64	RELO U45	RELO P64
DILA	-	-	■	■/-	■	■/-	■	■	■/-
SUPRO	-	-	■	■/-	■	■/-	■	■	■/-
LIGO	■	-	■/-	■/-	■/-	■/-	■/-	■/-	■/-
PLATA	■	-	-	■/-	-	■/-	-	-	■/-
TENI	-	■	-	-	-	-	-	-	-
ZONA	-	-	■	-	-	-	■	-	-
PROFILA2	-	-	-	■	-	■	■/-	■/-	■
Ceramic	-	-	■	-	-	-	■	-	-

Key: ■ suitable | ■/- partially suitable [reduced ventilation and/or increased shear forces] | - not suitable
 Material: Aluminium AN AW 6060 T66 / optionally with powder-coated black surface RAL9005





FEATURES



Data sheet



Tips & Tricks

Product No.	Description 1	Description 2	Packing Unit	EAN-13 Code	Weight per PC	Customs tariff no.
011700002	RELO U 64 substructure joist *	64 x 28 x 2000 mm, bright	PU 99 PCS	9009941008756	1,840 kg	7604 29 90
011700001	RELO U 64 substructure joist *	64 x 28 x 4000 mm, bright	PU 99 PCS	9009941008749	3,684 kg	7604 29 90
011700004	RELO U 64 substructure joist *	64 x 28 x 4000 mm, black	PU 99 PCS	9009941010902	3,684 kg	7604 29 90
009400004	RELO P 64 substructure joist *	64 x 41 x 2000 mm, bright	PU 99 PCS	9009941008695	2,160 kg	7604 29 90
009400002	RELO P 64 substructure joist *	64 x 41 x 4000 mm, bright	PU 99 PCS	9009941008015	4,320 kg	7604 29 90
009400005	RELO P 64 substructure joist *	64 x 41 x 4000 mm, black	PU 99 PCS	9009941010193	4,320 kg	7604 29 90
011800002	RELO K 64 substructure joist *	64 x 41 x 2000 mm, bright	PU 99 PCS	9009941008725	2,450 kg	7604 29 90
011800001	RELO K 64 substructure joist *	64 x 41 x 4000 mm, bright	PU 99 PCS	9009941008718	4,892 kg	7604 29 90
011800004	RELO K 64 substructure joist *	64 x 41 x 4000 mm, black	PU 99 PCS	9009941010919	4,892 kg	7604 29 90

Product No.	Description 1	Description 2	Packing Unit	EAN-13 Code	Weight per PC	Customs tariff no.
011700010	RELO U 45 substructure joist *	45 x 28 x 2000 mm, bright	PU 144 PCS	9009941015754	1,480 kg	7604 29 90
011700011	RELO U 45 substructure joist *	45 x 28 x 4000 mm, bright	PU 144 PCS	9009941015761	2,960 kg	7604 29 90
011700012	RELO U 45 substructure joist *	45 x 28 x 4000 mm, black	PU 144 PCS	9009941015778	2,960 kg	7604 29 90
011800010	RELO K 45 substructure joist *	45 x 41 x 2000 mm, bright	PU 144 PCS	9009941015785	1,840 kg	7604 29 90
011800011	RELO K 45 substructure joist *	45 x 41 x 4000 mm, bright	PU 144 PCS	9009941015792	3,680 kg	7604 29 90
011800012	RELO K 45 substructure joist *	45 x 41 x 4000 mm, black	PU 144 PCS	9009941015808	3,680 kg	7604 29 90

Product No.	Description 1	Description 2	Packing Unit	EAN-13 Code	Weight per PU	Customs tariff no.
016600000	RELO N 36 substructure joist *	36 x 34 x 2000 mm, bright	PU 144 PCS	9009941017161	1,730 kg	7604 29 90
016600001	RELO N 36 substructure joist *	36 x 34 x 4000 mm, bright	PU 144 PCS	9009941017178	3,460 kg	7604 29 90

Product No.	Description 1	Description 2	Packing Unit	EAN-13 Code	Weight per PU	Customs tariff no.
016500001	RELO T 43 substructure joist *	43 x 34 x 2.000 mm, bright	PU 144 PCS	9009941018441	1,860 kg	7604 29 90
016500000	RELO T 43 substructure joist *	43 x 34 x 4.000 mm, bright	PU 144 PCS	9009941016386	3,720 kg	7604 29 90

RELO system accessories are recommended per RELO substructure joist.
 * These packing units can not be branded

RELO

SYSTEM ACCESSORIES



RELO DETAILS

SYSTEM ACCESSORIES

The RELO system accessories enable a simple and quick system assembly of Terrace substructures.

RELO E corner brackets are used for interconnecting RELO substructure joists for frame construction, end/perimeter connections and insert connections.

RELO L extension brackets permit continuous length extension of the substructure joists. The longitudinal joist connections should be positioned directly over loadbearing points i.e. pedestals.

The corner and extension brackets are made from solid aluminium and fit perfectly into

the lateral side channel guides, automatically aligning the joists.

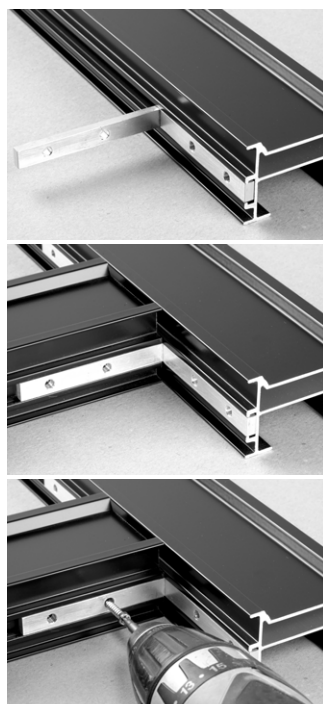
RELO A adapter is designed for screwless positioning of the substructure joists on the LIFTO adjustable pedestal and at the same time allows guidance for end to end joint connections.

RELO R railing is used for parallel alignment of the substructures and automatically gives a centre distance of 450 mm.

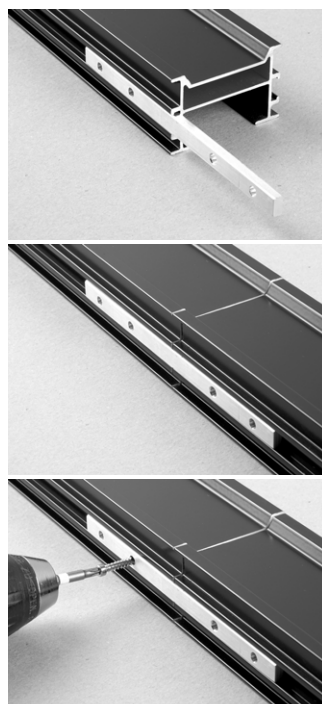
The hardened galvanized metal rods can be shortened if necessary.

RELO A and R can be combined quickly and easily through a simple plug-in connection

RELO E
Corner bracket



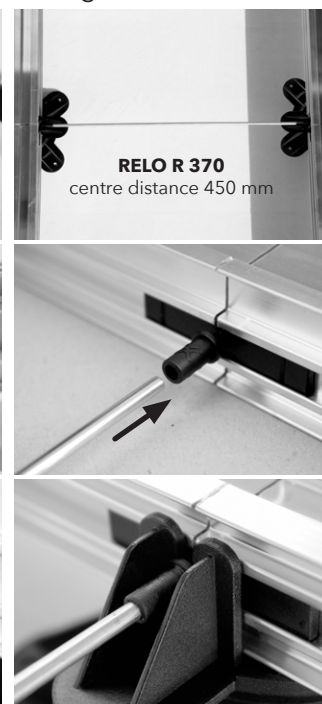
RELO L
Extension bracket



RELO A
Adapter



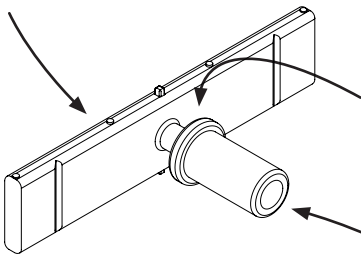
RELO R
Railing



RELO HIGHLIGHTS

SYSTEM ACCESSORIES

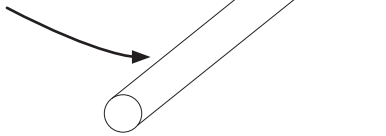
RELO A for a easy substructure extension



Screwless attachment for the LIFTO Pedestal

Screwless attachment for RELO R

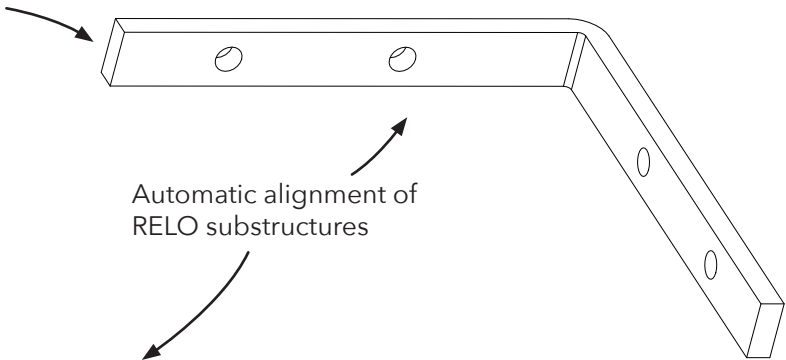
RELO R rail permits parallel axial distances of 450 mm



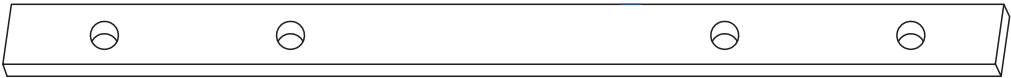
OVERVIEW	RELO A
Dimensions:	60 x 12 x 3 mm
Material:	PP plastic
Special features:	Screwless attachment for LIFTO and RELO R

OVERVIEW	RELO R
Dimensions:	4,0 x 370 mm
Material:	Hard galvanized metal rod
Special features:	Screwless attachment for RELO A

RELO E the efficient way of securing tangential joint connections

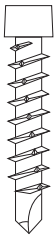


Automatic alignment of RELO substructures



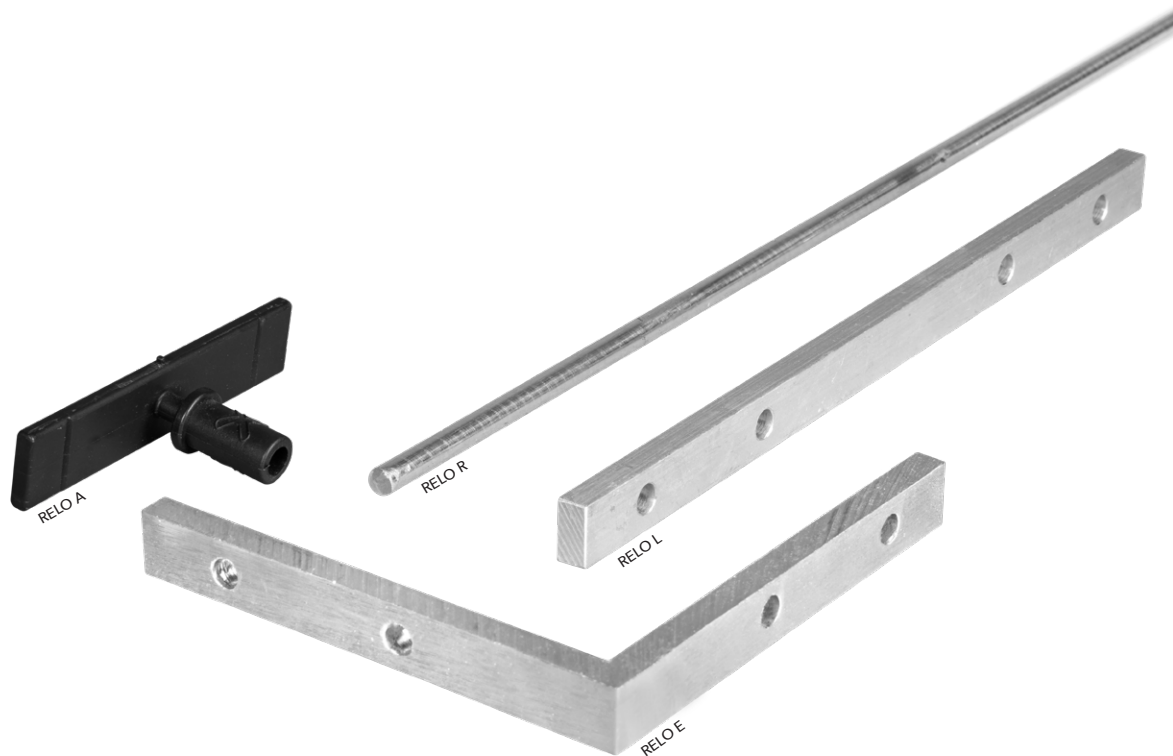
RELO L permits continuous and offset-free longitudinal substructures connections

System screw UNIA 4,2x17 mm included with RELO E and RELO L



OVERVIEW	RELO E
Dimensions:	80 x 80 x 10 x 5 mm
Material:	Aluminium
System screw:	4 x UNIA 4,2 x 17 mm
Special features:	System screws included

OVERVIEW	RELO L
Dimensions:	160 x 10 x 5 mm
Material:	Aluminium
System screw:	4 x UNIA 4,2 x 17 mm
Special features:	System screws included



FEATURES



Data sheet



Tips & Tricks



SET Pack



Branding

Product No.	Description 1	Description 2	Packing Unit	EAN-13 Code	Weight per PU	Customs tariff no.
014603000	RELO E corner joint angle	80 x 80 x 10 x 5 mm	PU 25 PCS	9009941013606	1,070 kg	7604 29 90
014603001	RELO E corner joint angle	80 x 80 x 10 x 5 mm	PU 50 PCS	9009941015013	1,350 kg	7604 29 90
014703000	RELO L along connector	160 x 10 x 5 mm	PU 25 PCS	9009941013613	1,070 kg	7604 29 90
014704001	RELO L along connector	160 x 10 x 5 mm	PU 50 PCS	9009941015020	1,490 kg	7604 29 90

Included in every package are the required UNIA1 system screw 4,2 x 17 mm

Product No.	Description 1	Description 2	Packing Unit	EAN-13 Code	Weight per PU	Customs tariff no.
009603000	RELO A, adapter for substructure joist		PU 40 PCS	9009941004871	0,165 kg	3926 90 97
009705000	RELO R370 Reling	370 mm	PU 20 PCS	9009941004895	1,031 kg	7217 20 30